

# Color chart

## Slabs

### *Capri*



ASH CHARCOAL OKA BEIGE SKY GREY HUSKY

### *Proma*



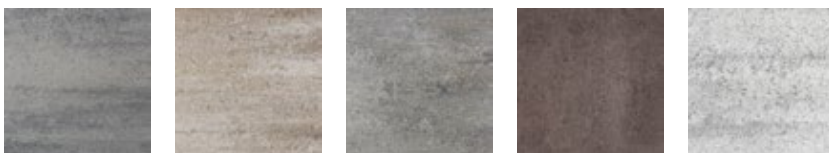
ASH CHARCOAL OKA BEIGE SKY GREY TRUFFLE VOLCANO HUSKY MIST

### *Proma XL*



ASH CHARCOAL OKA BEIGE SKY GREY CAVIAR TRUFFLE VOLCANO HUSKY MIST WHISTLER

### *Proma Quadra and Proma 3XL*



ASH CHARCOAL OKA BEIGE SKY GREY TRUFFLE MIST

### *Aspen*



ASH CHARCOAL CANYON OKA BEIGE CAVIAR

### *Zuko Grande*



ASH CHARCOAL CANYON OKA BEIGE CAVIAR

*Proma Barrette* (Slab and Paver)



ASH CHARCOAL CAVIAR\* TRUFFLE\* VOLCANO HUSKY

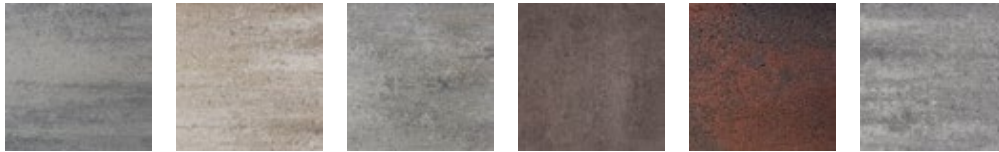
Pavers

*Capri*



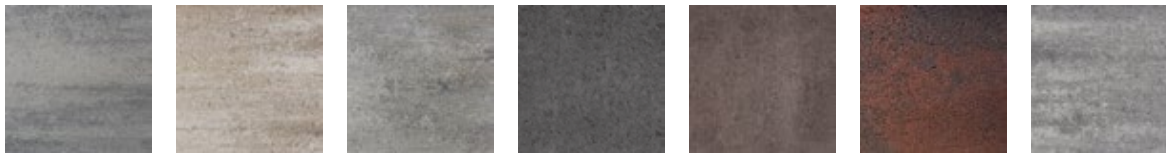
ASH CHARCOAL OKA BEIGE SKY GREY HUSKY

*Proma*



ASH CHARCOAL OKA BEIGE SKY GREY TRUFFLE\* VOLCANO HUSKY

*Proma XL*



ASH CHARCOAL OKA BEIGE SKY GREY CAVIAR\* TRUFFLE\* VOLCANO HUSKY

*Proma Quadra and Proma 3XL*



ASH CHARCOAL OKA BEIGE SKY GREY TRUFFLE\*

*Venza*



ASH CHARCOAL CANYON OKA BEIGE CAVIAR\*

*Aspen*



ASH CHARCOAL CANYON OKA BEIGE CAVIAR\*

*Zuko Grande*



ASH CHARCOAL CANYON OKA BEIGE CAVIAR\*

\*Important: The Truffle color is available by special order only.

\*The Caviar color will eventually replace the Midnight Black color. Midnight Black is available while supplies last.

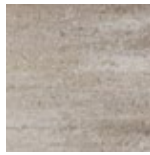
## Landscaping accessories

---

### *Ora Wall*



ASH CHARCOAL



OKA BEIGE



SKY GREY



TRUFFLE\*



HUSKY



MIST



WHISTLER

### *Solino Wall*



ASH CHARCOAL



OKA BEIGE



SKY GREY



CAVIAR\*



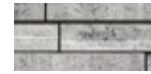
TRUFFLE\*



VOLCANO



HUSKY

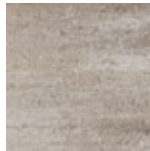


MIST

### *Ora Step*



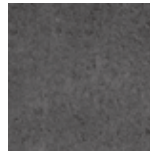
ASH CHARCOAL



OKA BEIGE



SKY GREY



CAVIAR\*



TRUFFLE\*



HUSKY

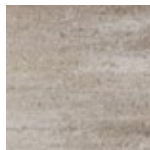


MIST

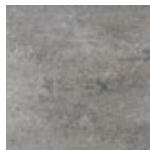
### *Proma Step*



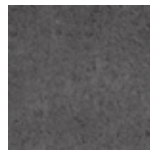
ASH CHARCOAL



OKA BEIGE



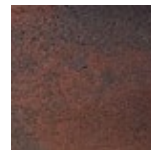
SKY GREY



CAVIAR\*



TRUFFLE\*



VOLCANO

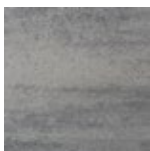


HUSKY

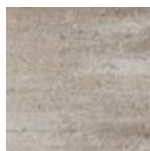


MIST

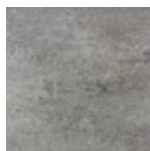
### *Solino Column and Coping*



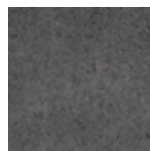
ASH CHARCOAL



OKA BEIGE



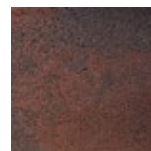
SKY GREY



CAVIAR\*



TRUFFLE\*



VOLCANO



HUSKY



MIST

---

## IMPORTANT

The colors of the products shown are as accurate as the photographs and printing process allow. We strongly suggest using an actual sample to make your color choice.

---

### *Proma XL Coping*



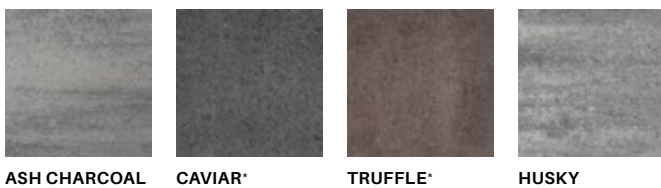
---

### *Spherik and Viva Grande*



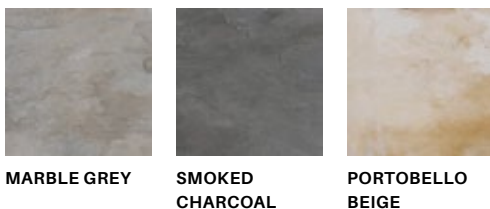
---

### *Okuta Path stone*



---

### *Garden and Japanese Path stone*



\*Important: The Truffle color is available by special order only.

\*The Caviar color will eventually replace the Midnight Black color. Midnight Black is available while supplies last.

# Color chart

## SLABS

	ASH CHARCOAL	OKA BEIGE	SKY GREY	CAVIAR	TRUFFLE	VOLCANO	HUSKY	MIST	WHISTLER	CANYON	MARBLE GREY	SMOKED CHARCOAL	PORTOBELLO BEIGE
ASPEN	●	●		●						●			
CAPRI	●	●	●				●						
PROMA BARRETTE	●			●	●	●	●						
PROMA	●	●	●		●	●	●	●					
PROMA XL	●	●	●	●	●	●	●	●	●				
PROMA QUADRA	●	●	●		●			●					
PROMA 3XL	●	●	●		●			●					
ZUKO GRANDE	●	●		●						●			

## PAVERS

	ASH CHARCOAL	OKA BEIGE	SKY GREY	CAVIAR	TRUFFLE	VOLCANO	HUSKY	MIST	WHISTLER	CANYON	MARBLE GREY	SMOKED CHARCOAL	PORTOBELLO BEIGE
ASPEN	●	●		●						●			
CAPRI	●	●	●				●						
PROMA BARRETTE	●			●	●	●	●						
PROMA	●	●	●		●	●	●						
PROMA XL	●	●	●	●	●	●	●						
PROMA QUADRA	●	●	●		●								
PROMA 3XL	●	●	●		●								
VENZA	●	●		●						●			
ZUKO GRANDE	●	●		●						●			
TENA	●			●									

# Color chart

## WALLS

	ASH CHARCOAL	OKA BEIGE	SKY GREY	CAVIAR	TRUFFLE	VOLCANO	HUSKY	MIST	WHISTLER	CANYON	MARBLE GREY	SMOKED CHARCOAL	PORTOBELLO BEIGE
ORA WALL	●	●	●		●		●	●	●				
SOLINO WALL	●	●	●	●	●	●	●	●					

## ACCESSORIES

	ASH CHARCOAL	OKA BEIGE	SKY GREY	CAVIAR	TRUFFLE	VOLCANO	HUSKY	MIST	WHISTLER	CANYON	MARBLE GREY	SMOKED CHARCOAL	PORTOBELLO BEIGE
ORA STEP	●	●	●	●	●		●	●					
PROMA STEP	●	●	●	●	●	●	●	●					
SOLINO COLUMN	●	●	●	●	●	●	●	●					
SOLINO COPING	●	●	●	●	●	●	●	●					
PROMA XL COPING	●	●	●	●	●		●	●	●				
SPHERIK COPING	●	●		●						●			
VIVA GRANDE COPING	●	●		●						●			
OKUTA PATH STONE	●			●	●		●						
GARDEN PATH STONE											●	●	●
JAPANESE PATH STONE											●	●	●

# Technical information chart

## Slabs

PRODUCTS	ROWS PER SKID	PER ROW	PER SKID	LINEAR FOOT	WEIGHT
CAPRI	10 rows	10.66 ft <sup>2</sup> per row	106.6 ft <sup>2</sup> per skid	80 lin.ft per skid	3000 lbs
PROMA BARRETTE	9 rows	20 units per row	160 units per skid	00 lin.ft per skid	2260 lbs
PROMA	10 rows	10.66 ft <sup>2</sup> per row	106.6 ft <sup>2</sup> per skid	80 lin.ft per skid	3000 lbs
PROMA XL	10 rows	10.66 ft <sup>2</sup> per row	106.6 ft <sup>2</sup> per skid	80 lin.ft per skid	3050 lbs
PROMA QUADRA	12 rows	7.1 ft <sup>2</sup> per row	85.2 ft <sup>2</sup> per skid	32 lin.ft per skid	2440 lbs
PROMA 3XL	10 rows	10.66 ft <sup>2</sup> per row	106.6 ft <sup>2</sup> per skid	40 lin.ft per skid	3050 lbs
ASPEN	12 rows	11.54 ft <sup>2</sup> per row	138.5 ft <sup>2</sup> per skid	141.65 lin.ft per skid	3280 lbs
ZUKO GRANDE	12 rows	11.54 ft <sup>2</sup> per row	138.5 ft <sup>2</sup> per skid	141.65 lin.ft per skid	3280 lbs

## Pavers

PRODUCTS	ROWS PER SKID	PER ROW	PER SKID	LINEAR FOOT	WEIGHT
CAPRI	8 rows	10.66 ft <sup>2</sup> per row	85.33 ft <sup>2</sup> per skid	64 lin.ft per skid	3600 lbs
PROMA BARRETTE	9 rows	20 units per row	160 units per skid	00 lin.ft per skid	3330 lbs
PROMA	8 rows	10.66 ft <sup>2</sup> per row	85.33 ft <sup>2</sup> per skid	64 lin.ft per skid	3500 lbs
PROMA XL	8 rows	10.66 ft <sup>2</sup> per row	85.33 ft <sup>2</sup> per skid	64 lin.ft per skid	3500 lbs
PROMA QUADRA	8 rows	7.1 ft <sup>2</sup> per row	56.8 ft <sup>2</sup> per skid	21.33 lin.ft per skid	2480 lbs
PROMA 3XL	8 rows	10.66 ft <sup>2</sup> per row	85.33 ft <sup>2</sup> per skid	32 lin.ft per skid	3570 lbs
ASPEN	9 rows	11.54 ft <sup>2</sup> per row	103.86 ft <sup>2</sup> per skid	106.24 lin.ft per skid	3475 lbs
VENZA	9 rows	11.51 ft <sup>2</sup> per row	103.59 ft <sup>2</sup> per skid	211.5 lin.ft per skid	3335 lbs
ZUKO GRANDE	9 rows	11.54 ft <sup>2</sup> per row	103.86 ft <sup>2</sup> per skid	106.24 lin.ft per skid	3475 lbs
TENA 6 X 12	7 rows	11.57 ft <sup>2</sup> per row	80.97 ft <sup>2</sup> per skid	82.25 lin.ft per skid	3630 lbs
TENA 12 X 12	7 rows	7.75 ft <sup>2</sup> per row	54.25 ft <sup>2</sup> per skid	27.4 lin.ft per skid	2640 lbs
TENA 12 X 24	7 rows	11.57 ft <sup>2</sup> per row	80.97 ft <sup>2</sup> per skid	82.25 lin.ft per skid	3630 lbs

## Accessories

PRODUCTS	ROWS PER SKID	PER ROW	PER SKID	WEIGHT
ORA WALL	4 rows	7.13 ft <sup>2</sup> per row	28.5 ft <sup>2</sup> per skid	2755 lbs
SOLINO WALL	7 rows	4.43 ft <sup>2</sup> per row	31 ft <sup>2</sup> per skid	3350 lbs
ORA STEP	3 rows	2 units per row	6 units per skid	2825 lbs
PROMA STEP	6 rows	5.33 lin.ft per row	32 lin.ft per skid	1550 lbs
SOLINO COLUMN	6 rows	12 lin.ft per row	72 lin.ft per skid	3125 lbs
SOLINO COPING	6 rows	12 lin.ft per row	72 lin.ft per skid	3125 lbs
PROMA XL COPING	8 rows	8 lin.ft per row	64 lin.ft per skid	2455 lbs
SPHERIK COPING	3 rows	27.5 lin.ft per row	82.5 lin.ft per skid	2885 lbs
VIVA GRANDE COPING	9 rows	11.6 lin.ft per row	104.4 lin.ft per skid	3300 lbs
OKUTA PATH STONE	8 rows	12 lin.ft per row	96 lin.ft per skid	2880 lbs
GARDEN PATH STONE	10 rows	6 units per row	60 units per skid	2236 lbs
JAPANESE PATH STONE	1 row	-	14 units per skid	1285 lbs