

Color chart

Slabs

Capri



ASH CHARCOAL OKA BEIGE SKY GREY HUSKY

Proma



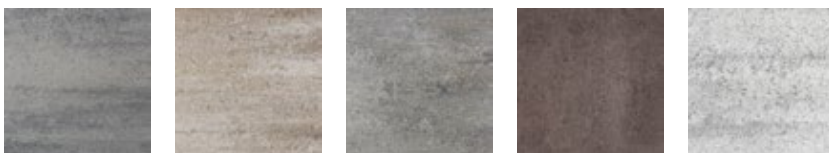
ASH CHARCOAL OKA BEIGE SKY GREY TRUFFLE VOLCANO HUSKY MIST

Proma XL



ASH CHARCOAL OKA BEIGE SKY GREY CAVIAR TRUFFLE VOLCANO HUSKY MIST WHISTLER

Proma Quadra and Proma 3XL



ASH CHARCOAL OKA BEIGE SKY GREY TRUFFLE MIST

Aspen



ASH CHARCOAL CANYON OKA BEIGE CAVIAR

Zuko Grande



ASH CHARCOAL CANYON OKA BEIGE CAVIAR

Proma Barrette (Slab and Paver)



ASH CHARCOAL CAVIAR* TRUFFLE* VOLCANO HUSKY

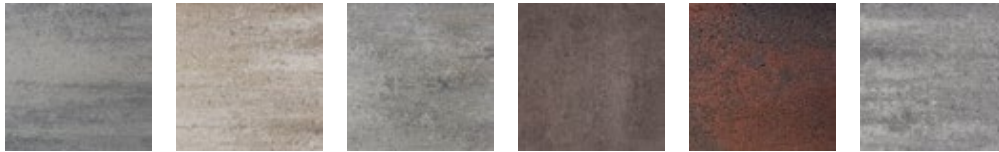
Pavers

Capri



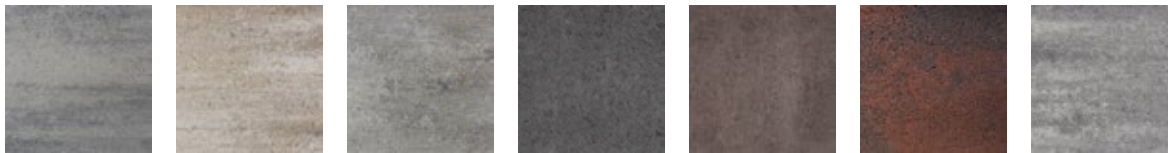
ASH CHARCOAL OKA BEIGE SKY GREY HUSKY

Proma



ASH CHARCOAL OKA BEIGE SKY GREY TRUFFLE* VOLCANO HUSKY

Proma XL



ASH CHARCOAL OKA BEIGE SKY GREY CAVIAR* TRUFFLE* VOLCANO HUSKY

Proma Quadra and Proma 3XL



ASH CHARCOAL OKA BEIGE SKY GREY TRUFFLE*

Venza



ASH CHARCOAL CANYON OKA BEIGE CAVIAR*

Aspen



ASH CHARCOAL CANYON OKA BEIGE CAVIAR*

Zuko Grande



ASH CHARCOAL CANYON OKA BEIGE CAVIAR*

*Important: The Truffle color is available by special order only.

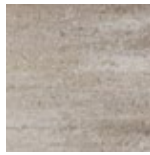
*The Caviar color will eventually replace the Midnight Black color. Midnight Black is available while supplies last.

Landscaping accessories

Ora Wall



ASH CHARCOAL



OKA BEIGE



SKY GREY



TRUFFLE*



HUSKY



MIST



WHISTLER

Solino Wall



ASH CHARCOAL



OKA BEIGE



SKY GREY



CAVIAR*



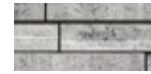
TRUFFLE*



VOLCANO



HUSKY

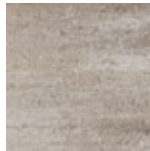


MIST

Ora Step



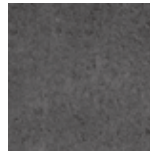
ASH CHARCOAL



OKA BEIGE



SKY GREY



CAVIAR*



TRUFFLE*



HUSKY

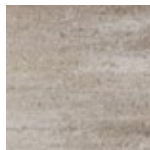


MIST

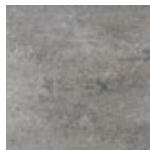
Proma Step



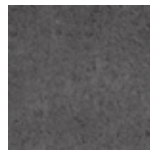
ASH CHARCOAL



OKA BEIGE



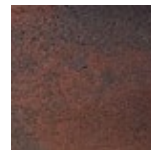
SKY GREY



CAVIAR*



TRUFFLE*



VOLCANO

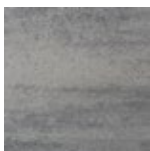


HUSKY

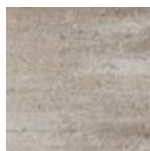


MIST

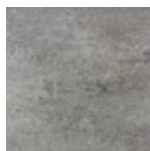
Solino Column and Coping



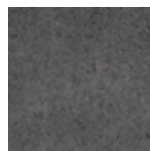
ASH CHARCOAL



OKA BEIGE



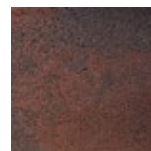
SKY GREY



CAVIAR*



TRUFFLE*



VOLCANO



HUSKY



MIST

IMPORTANT

The colors of the products shown are as accurate as the photographs and printing process allow. We strongly suggest using an actual sample to make your color choice.

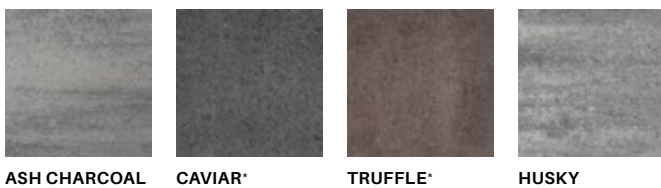
Proma XL Coping



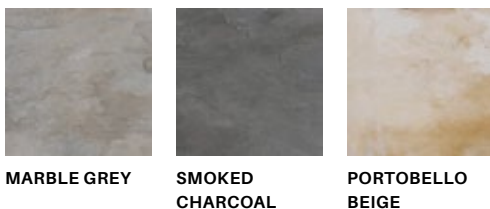
Spherik and Viva Grande



Okuta Path stone



Garden and Japanese Path stone



*Important: The Truffle color is available by special order only.

*The Caviar color will eventually replace the Midnight Black color. Midnight Black is available while supplies last.

Color chart

SLABS

| | ASH CHARCOAL | OKA BEIGE | SKY GREY | CAVIAR | TRUFFLE | VOLCANO | HUSKY | MIST | WHISTLER | CANYON | MARBLE GREY | SMOKED CHARCOAL | PORTOBELLO BEIGE |
|----------------|--------------|-----------|----------|--------|---------|---------|-------|------|----------|--------|-------------|-----------------|------------------|
| ASPEN | ● | ● | | ● | | | | | | ● | | | |
| CAPRI | ● | ● | ● | | | | ● | | | | | | |
| PROMA BARRETTE | ● | | | ● | ● | ● | ● | | | | | | |
| PROMA | ● | ● | ● | | ● | ● | ● | ● | | | | | |
| PROMA XL | ● | ● | ● | ● | ● | ● | ● | ● | ● | | | | |
| PROMA QUADRA | ● | ● | ● | | ● | | | ● | | | | | |
| PROMA 3XL | ● | ● | ● | | ● | | | ● | | | | | |
| ZUKO GRANDE | ● | ● | | ● | | | | | | ● | | | |

PAVERS

| | ASH CHARCOAL | OKA BEIGE | SKY GREY | CAVIAR | TRUFFLE | VOLCANO | HUSKY | MIST | WHISTLER | CANYON | MARBLE GREY | SMOKED CHARCOAL | PORTOBELLO BEIGE |
|----------------|--------------|-----------|----------|--------|---------|---------|-------|------|----------|--------|-------------|-----------------|------------------|
| ASPEN | ● | ● | | ● | | | | | | ● | | | |
| CAPRI | ● | ● | ● | | | | ● | | | | | | |
| PROMA BARRETTE | ● | | | ● | ● | ● | ● | | | | | | |
| PROMA | ● | ● | ● | | ● | ● | ● | | | | | | |
| PROMA XL | ● | ● | ● | ● | ● | ● | ● | | | | | | |
| PROMA QUADRA | ● | ● | ● | | ● | | | | | | | | |
| PROMA 3XL | ● | ● | ● | | ● | | | | | | | | |
| VENZA | ● | ● | | ● | | | | | | ● | | | |
| ZUKO GRANDE | ● | ● | | ● | | | | | | ● | | | |
| TENA | ● | | | ● | | | | | | | | | |

Color chart

WALLS

| | ASH CHARCOAL | OKA BEIGE | SKY GREY | CAVIAR | TRUFFLE | VOLCANO | HUSKY | MIST | WHISTLER | CANYON | MARBLE GREY | SMOKED CHARCOAL | PORTOBELLO BEIGE |
|-------------|--------------|-----------|----------|--------|---------|---------|-------|------|----------|--------|-------------|-----------------|------------------|
| ORA WALL | ● | ● | ● | | ● | | ● | ● | ● | | | | |
| SOLINO WALL | ● | ● | ● | ● | ● | ● | ● | ● | | | | | |

ACCESSORIES

| | ASH CHARCOAL | OKA BEIGE | SKY GREY | CAVIAR | TRUFFLE | VOLCANO | HUSKY | MIST | WHISTLER | CANYON | MARBLE GREY | SMOKED CHARCOAL | PORTOBELLO BEIGE |
|---------------------|--------------|-----------|----------|--------|---------|---------|-------|------|----------|--------|-------------|-----------------|------------------|
| ORA STEP | ● | ● | ● | ● | ● | | ● | ● | | | | | |
| PROMA STEP | ● | ● | ● | ● | ● | ● | ● | ● | | | | | |
| SOLINO COLUMN | ● | ● | ● | ● | ● | ● | ● | ● | | | | | |
| SOLINO COPING | ● | ● | ● | ● | ● | ● | ● | ● | | | | | |
| PROMA XL COPING | ● | ● | ● | ● | ● | | ● | ● | ● | | | | |
| SPHERIK COPING | ● | ● | | ● | | | | | | ● | | | |
| VIVA GRANDE COPING | ● | ● | | ● | | | | | | ● | | | |
| OKUTA PATH STONE | ● | | | ● | ● | | ● | | | | | | |
| GARDEN PATH STONE | | | | | | | | | | | ● | ● | ● |
| JAPANESE PATH STONE | | | | | | | | | | | ● | ● | ● |

Technical information chart

Slabs

| PRODUCTS | ROWS PER SKID | PER ROW | PER SKID | LINEAR FOOT | WEIGHT |
|----------------|---------------|-------------------------------|--------------------------------|------------------------|----------|
| CAPRI | 10 rows | 10.66 ft ² per row | 106.6 ft ² per skid | 80 lin.ft per skid | 3000 lbs |
| PROMA BARRETTE | 9 rows | 20 units per row | 160 units per skid | 00 lin.ft per skid | 2260 lbs |
| PROMA | 10 rows | 10.66 ft ² per row | 106.6 ft ² per skid | 80 lin.ft per skid | 3000 lbs |
| PROMA XL | 10 rows | 10.66 ft ² per row | 106.6 ft ² per skid | 80 lin.ft per skid | 3050 lbs |
| PROMA QUADRA | 12 rows | 7.1 ft ² per row | 85.2 ft ² per skid | 32 lin.ft per skid | 2440 lbs |
| PROMA 3XL | 10 rows | 10.66 ft ² per row | 106.6 ft ² per skid | 40 lin.ft per skid | 3050 lbs |
| ASPEN | 12 rows | 11.54 ft ² per row | 138.5 ft ² per skid | 141.65 lin.ft per skid | 3280 lbs |
| ZUKO GRANDE | 12 rows | 11.54 ft ² per row | 138.5 ft ² per skid | 141.65 lin.ft per skid | 3280 lbs |

Pavers

| PRODUCTS | ROWS PER SKID | PER ROW | PER SKID | LINEAR FOOT | WEIGHT |
|----------------|---------------|-------------------------------|---------------------------------|------------------------|----------|
| CAPRI | 8 rows | 10.66 ft ² per row | 85.33 ft ² per skid | 64 lin.ft per skid | 3600 lbs |
| PROMA BARRETTE | 9 rows | 20 units per row | 160 units per skid | 00 lin.ft per skid | 3330 lbs |
| PROMA | 8 rows | 10.66 ft ² per row | 85.33 ft ² per skid | 64 lin.ft per skid | 3500 lbs |
| PROMA XL | 8 rows | 10.66 ft ² per row | 85.33 ft ² per skid | 64 lin.ft per skid | 3500 lbs |
| PROMA QUADRA | 8 rows | 7.1 ft ² per row | 56.8 ft ² per skid | 21.33 lin.ft per skid | 2480 lbs |
| PROMA 3XL | 8 rows | 10.66 ft ² per row | 85.33 ft ² per skid | 32 lin.ft per skid | 3570 lbs |
| ASPEN | 9 rows | 11.54 ft ² per row | 103.86 ft ² per skid | 106.24 lin.ft per skid | 3475 lbs |
| VENZA | 9 rows | 11.51 ft ² per row | 103.59 ft ² per skid | 211.5 lin.ft per skid | 3335 lbs |
| ZUKO GRANDE | 9 rows | 11.54 ft ² per row | 103.86 ft ² per skid | 106.24 lin.ft per skid | 3475 lbs |
| TENA 6 X 12 | 7 rows | 11.57 ft ² per row | 80.97 ft ² per skid | 82.25 lin.ft per skid | 3630 lbs |
| TENA 12 X 12 | 7 rows | 7.75 ft ² per row | 54.25 ft ² per skid | 27.4 lin.ft per skid | 2640 lbs |
| TENA 12 X 24 | 7 rows | 11.57 ft ² per row | 80.97 ft ² per skid | 82.25 lin.ft per skid | 3630 lbs |

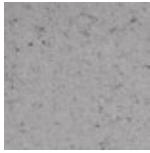
Accessories

| PRODUCTS | ROWS PER SKID | PER ROW | PER SKID | WEIGHT |
|---------------------|---------------|------------------------------|-------------------------------|----------|
| ORA WALL | 4 rows | 7.13 ft ² per row | 28.5 ft ² per skid | 2755 lbs |
| SOLINO WALL | 7 rows | 4.43 ft ² per row | 31 ft ² per skid | 3350 lbs |
| ORA STEP | 3 rows | 2 units per row | 6 units per skid | 2825 lbs |
| PROMA STEP | 6 rows | 5.33 lin.ft per row | 32 lin.ft per skid | 1550 lbs |
| SOLINO COLUMN | 6 rows | 12 lin.ft per row | 72 lin.ft per skid | 3125 lbs |
| SOLINO COPING | 6 rows | 12 lin.ft per row | 72 lin.ft per skid | 3125 lbs |
| PROMA XL COPING | 8 rows | 8 lin.ft per row | 64 lin.ft per skid | 2455 lbs |
| SPHERIK COPING | 3 rows | 27.5 lin.ft per row | 82.5 lin.ft per skid | 2885 lbs |
| VIVA GRANDE COPING | 9 rows | 11.6 lin.ft per row | 104.4 lin.ft per skid | 3300 lbs |
| OKUTA PATH STONE | 8 rows | 12 lin.ft per row | 96 lin.ft per skid | 2880 lbs |
| GARDEN PATH STONE | 10 rows | 6 units per row | 60 units per skid | 2236 lbs |
| JAPANESE PATH STONE | 1 row | - | 14 units per skid | 1285 lbs |

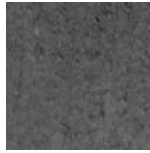
Color chart

Stones

Architectural



GREY



CAVIAR*

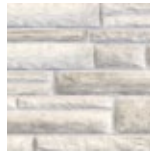


WHISTLER

Lima



CHARCOAL



ALMOND WHITE



ICY GREY

Londana



MOORECREST

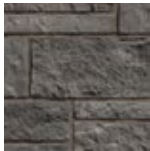


AMARETTO



OCEAN

Lorado



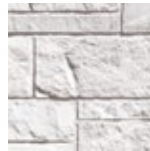
CHARCOAL



ALMOND WHITE



ICY GREY



EGGSHELL

Lugano



MOORECREST

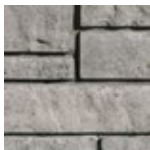


AMARETTO

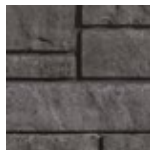


OCEAN

Novello



ASH CHARCOAL



CAVIAR*



MIST



WHISTLER

Oxford



ASH CHARCOAL



CAVIAR*

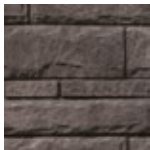


MIST

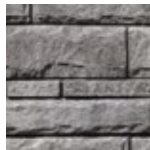


WHISTLER

Stanford



TRUFFLE



HUSKY



MIST



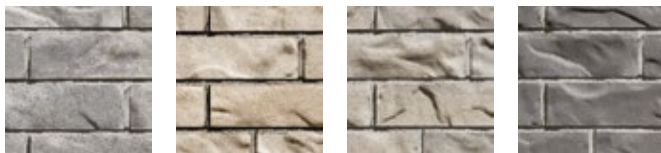
WHISTLER

IMPORTANT

The colors of the products shown are as accurate as the photographs and printing process allow. We strongly suggest using an actual sample to make your color choice.

Bricks

Champlain



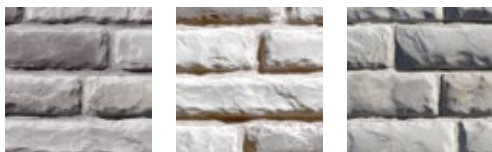
ASH CHARCOAL OKA BEIGE SKY GREY CAVIAR*

Clayden



TRUFFLE VOLCANO HUSKY WHISTLER

Liano



MOORECREST AMARETTO OCEAN

Lotis and Lotis Grande



CHARCOAL ALMOND WHITE ICY GREY EGGSHELL

Romania



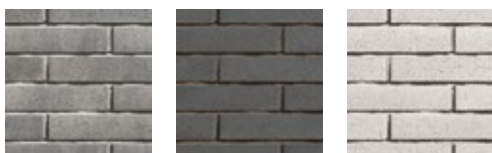
ASH CHARCOAL CAVIAR* WHISTLER

Roxton



ASH CHARCOAL CAVIAR* WHISTLER

Normandie



ASH CHARCOAL CAVIAR* WHISTLER

Oslo



TRUFFLE VOLCANO HUSKY WHISTLER

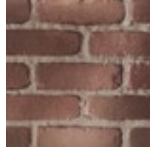
*The Caviar color will eventually replace the Midnight Black color. Midnight Black is available while supplies last.

Alternative Masonry

Brique

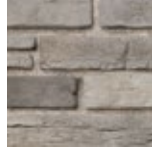


BLEND
ED
WHITE



ANTI
QUE
RED

Campagnard



MOO
RE
CRE
ST



AM
ARE
TTO



OCE
AN

Katalina



MOO
RE
CRE
ST



AM
ARE
TTO

Kenya



MOO
RE
CRE
ST



CHA
R
CO
AL



AL
MON
D
WH
ITE

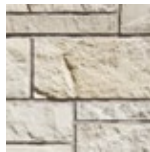


CAP
PU
CC
INO

Lorena



CHA
R
CO
AL



AL
MON
D
WH
ITE

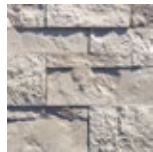


ICY
GR
EY

Nora



MOO
RE
CRE
ST

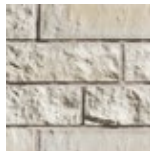


VAN
ILLA
BE
IGE

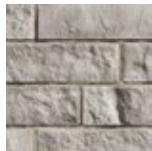
Sirenis



CHA
R
CO
AL

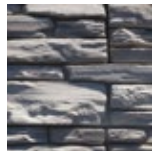


AL
MON
D
WH
ITE



ICY
GR
EY

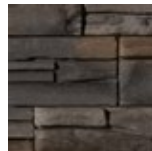
Violie



MOO
RE
CRE
ST



CHA
R
CO
AL

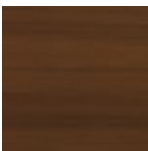


MAR
IG
OLD



CAP
PU
CC
INO

Rialux



BARK



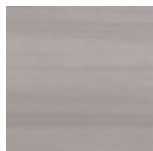
BIRCH



EBONY



SIENNA



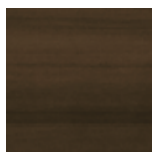
GREY OAK



BALSA



DRIFTWOOD



DARK WALNUT



NORDIC CEDAR



MATTE BLACK

Color chart

STONES

| | ASH CHARCOAL | OKA BEIGE | SKY GREY | CAVIAR | TRUFFLE | VOLCANO | HUSKY | MIST | WHISTLER | CHARCOAL | ALMOND WHITE | ICY GREY | EGGSHELL | MOORECREST | AMARETTO | OCEAN | GREY |
|---------------|--------------|-----------|----------|--------|---------|---------|-------|------|----------|----------|--------------|----------|----------|------------|----------|-------|------|
| ARCHITECTURAL | | | | ● | | | | | ● | | | | | | | | ● |
| LIMA | | | | | | | | | | ● | ● | ● | | | | | |
| LONDANA | | | | | | | | | | | | | | ● | ● | ● | |
| LORADO | | | | | | | | | | ● | ● | ● | ● | | | | |
| LUGANO | | | | | | | | | | | | | | ● | ● | ● | |
| NOVELLO | ● | | | ● | | | | ● | ● | | | | | | | | |
| OXFORD | ● | | | ● | | | | ● | ● | | | | | | | | |
| STANFORD | | | | | ● | | ● | ● | ● | | | | | | | | |

BRICKS

| | ASH CHARCOAL | OKA BEIGE | SKY GREY | CAVIAR | TRUFFLE | VOLCANO | HUSKY | MIST | WHISTLER | CHARCOAL | ALMOND WHITE | ICY GREY | EGGSHELL | MOORECREST | AMARETTO | OCEAN | GREY |
|----------------------|--------------|-----------|----------|--------|---------|---------|-------|------|----------|----------|--------------|----------|----------|------------|----------|-------|------|
| CHAMPLAIN | ● | ● | ● | ● | | | | | | | | | | | | | |
| CLAYDEN | | | | | ● | ● | ● | | ● | | | | | | | | |
| LIANO | | | | | | | | | | | | | | ● | ● | ● | |
| LOTIS & LOTIS GRANDE | | | | | | | | | | ● | ● | ● | ● | | | | |
| OSLO | | | | | ● | ● | ● | | ● | | | | | | | | |
| ROMANIA | ● | | | ● | | | | | ● | | | | | | | | |
| ROXTON | ● | | | ● | | | | | ● | | | | | | | | |
| NORMANDIE | ● | | | ● | | | | | ● | | | | | | | | |

Color chart

ALTERNATIVE

| | BLENDING WHITE | ANTIQUÉ RED | MOORECREST | AMARETTO | OCEAN | CHARCOAL | ALMOND WHITE | ICY GREY | CAPPUCCINO | MARGOLD | VANILLA BEIGE |
|------------|----------------|-------------|------------|----------|-------|----------|--------------|----------|------------|---------|---------------|
| BRIQUETTE | ● | ● | | | | | | | | | |
| CAMPAGNARD | | | ● | ● | ● | | | | | | |
| KATALINA | | | ● | ● | | | | | | | |
| KENYA | | | ● | | | ● | ● | | ● | | |
| LORENA | | | | | | ● | ● | ● | | | |
| NORA | | | ● | | | | | | | | ● |
| SIRENIS | | | | | | ● | ● | ● | | | |
| VIOLIE | | | ● | | | ● | | | ● | ● | |

NEW

Home Exterior *Design* Tool

Explore the tool designed to help you visualize Rinox masonry products and their exquisite range of colors harmoniously blending with Rialux aluminum products. Select your desired scene and the specific products you're considering, allowing you to gain invaluable insights to confidently make your final decision.



TRY OUR HOME EXTERIOR DESIGN TOOL:

Charte des informations techniques

Architectural

| PRODUCTS | ROWS PER SKID | PER ROW | PER SKID | WEIGHT |
|----------|---------------|----------------------------------|-----------------------------------|----------|
| 4 x 24 | 8 rows | 11.88 ft ² - 18 units | 95.04 ft ² - 144 units | 3743 lbs |
| 8 x 16 | 4 rows | 17.6 ft ² - 20 units | 70.4 ft ² - 80 units | 2740 lbs |
| 8 x 24 | 8 rows | 10.64 ft ² - 8 units | 85.12 ft ² - 64 units | 3202 lbs |
| 12 x 24 | 8 rows | 12 ft ² - 6 units | 96 ft ² - 48 units | 3630 lbs |

Stones

| PRODUCTS | ROWS PER SKID | PER ROW | PER SKID | WEIGHT |
|----------|---------------|-------------------------------|-------------------------------|----------|
| LIMA | 7 rows | 8.9 ft ² per row | 62.3 ft ² per skid | 1940 lbs |
| LONDANA | 7 rows | 8.9 ft ² per row | 62.3 ft ² per skid | 2214 lbs |
| LORADO | 7 rows | 8.9 ft ² per row | 62.3 ft ² per skid | 1940 lbs |
| LUGANO | 7 rows | 8.9 ft ² per row | 62.3 ft ² per skid | 2199 lbs |
| LUGANO B | 7 rows | 9.7 ft ² per row | 67.9 ft ² per skid | 2729 lbs |
| NOVELLO | 8 rows | 12.25 ft ² per row | 98 ft ² per skid | 3740 lbs |
| OXFORD | 8 rows | 12.4 ft ² per row | 99.2 ft ² per skid | 3998 lbs |
| STANFORD | 8 rows | 12.4 ft ² per row | 99.2 ft ² per skid | 3998 lbs |

Bricks

| PRODUCTS | ROWS PER SKID | PER ROW | PER SKID | WEIGHT |
|--------------|---------------|-------------------------------|--------------------------------|----------|
| CHAMPLAIN | 8 rows | 13.5 ft ² per row | 108 ft ² per skid | 3855 lbs |
| CLAYDEN | 6 rows | 11.04 ft ² per row | 66.24 ft ² per skid | 2450 lbs |
| LIANO | 7 rows | 8 ft ² per row | 56 ft ² per skid | 2220 lbs |
| LOTIS | 7 rows | 8 ft ² per row | 56 ft ² per skid | 1848 lbs |
| LOTIS GRANDE | 7 rows | 8 ft ² per row | 56 ft ² per skid | 2022 lbs |
| ROMANIA | 9 rows | 12.3 ft ² per row | 110.7 ft ² per skid | 3945 lbs |
| ROXTON | 8 rows | 11.62 ft ² per row | 93 ft ² per skid | 3415 lbs |
| NORMANDIE | 10 rows | 7.79 ft ² per row | 77.9 ft ² per skid | 2715 lbs |
| OSLO | 6 rows | 11.04 ft ² per row | 66.24 ft ² per skid | 2450 lbs |

Alternative Masonry - Stones

| PRODUCTS | PER CRATE | WEIGHT |
|----------------|--------------------------------|---------|
| BRIQUETTE | 78 ft ² per crate | 600 lbs |
| CAMPAGNARD | 40.2 ft ² per crate | 504 lbs |
| LUGANO | 40.2 ft ² per crate | 458 lbs |
| KENYA | 35 ft ² per crate | 455 lbs |
| LORENA | 48 ft ² per crate | 635 lbs |
| NORA | 45 ft ² per crate | 635 lbs |
| SIRENIS | 46 ft ² per crate | 521 lbs |
| SIRENIS GRANDE | 47 ft ² per crate | 545 lbs |
| VIOLIE | 46.8 ft ² per crate | 572 lbs |

Alternative Masonry - Corner

| PRODUCTS | PER CRATE | PER HALF-CRATE | WEIGHT |
|-------------------|---------------------|--------------------------|---------|
| BRIQUETTE COIN 90 | 68 lin.ft per crate | 34 lin.ft per half-crate | 600 lbs |
| CAMPAGNARD COIN | 30 lin.ft per crate | 16 lin.ft per half-crate | 312 lbs |
| LUGANO COIN | 30 lin.ft per crate | 16 lin.ft per half-crate | 430 lbs |
| KENYA COIN | 32 lin.ft per crate | 16 lin.ft per half-crate | 450 lbs |
| LORENA COIN | 30 lin.ft per crate | 16 lin.ft per half-crate | 430 lbs |
| NORA COIN | 30 lin.ft per crate | 16 lin.ft per half-crate | 430 lbs |
| SIRENIS COIN | 30 lin.ft per crate | 16 lin.ft per half-crate | 376 lbs |
| VIOLIE COIN | 45 lin.ft per crate | 16 lin.ft per half-crate | 555 lbs |